

Shine Bright Play Mat

Stacey Yacula



Approximate Quilt Size: 32½" x 32½"



24287 A



24287 Q



24288 A



24289 Q



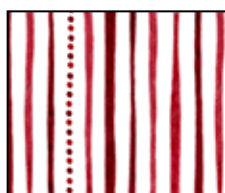
24290 Q



24290 R
(backing only)



24290 Z



24291 R
(binding only)

FABRIC REQUIREMENTS	
Design	Yards
24287 A	$\frac{5}{8}$
24287 Q	$\frac{1}{3}$
24288 A	$\frac{1}{4}$
24289 Q	$\frac{1}{4}$
24290 Q	$\frac{1}{3}$
24290 R*	1
24290 Z	$\frac{7}{8}$
24291 R**	$\frac{3}{8}$
36" x 36" piece of batting	
Basic sewing supplies	
Fabric marking pencil	
Template plastic for Block C templates	
*backing only	
**binding only	

Designer Notes

- When printing the two templates needed for Block C (see pages 5 and 6), be sure to measure the 1" square printed on the page. If the square does not measure 1" x 1", reprint paper templates and check the box *Actual Size* under the Print Options.
- Glue paper templates to template plastic and allow to air dry completely. Cut out templates on solid outside lines. The side of the template with the printed-paper template should be facing up on top of the right side of the fabric.

Cutting Instructions

Note: A widthwise cut (WOF) is from selvage to selvage. Cut and subcut in order as given as several subcuts are from the remains of previously cut strips.

24287 A: Fabric A (cream bear toss print)

Block B

- Cut (2) $8\frac{1}{2}$ " x WOF strips. Subcut (4) $8\frac{1}{2}$ " x $16\frac{1}{2}$ " rectangles.

24287 Q: Fabric B (lt blue bear toss print)

Quilt Center

- Cut (1) $8\frac{1}{2}$ " x WOF strip. Subcut (1) $8\frac{1}{2}$ " square. Reserve remaining fabric.

Block A

- From reserved fabric, subcut (4) $4\frac{1}{2}$ " squares.

24288 A: Fabric C (cream tonal)

Block A

- Cut (1) $4\frac{7}{8}$ " x WOF strip. Subcut (6) $4\frac{7}{8}$ " squares. Cut each square on the diagonal once to yield (12) $4\frac{7}{8}$ " HSTs (half-square triangles).

24289 Q: Fabric D (blue/white print)

Block A

- Cut (1) $3\frac{3}{4}$ " x WOF strip. Subcut (8) $3\frac{3}{4}$ " squares. Cut each square on the diagonal once to yield (16) $3\frac{3}{4}$ " HSTs (half-square triangles).

24290 Q: Fabric E (blue tonal)

Quilt Center

- Cut (1) $8\frac{7}{8}$ " x WOF strip. Subcut (2) $8\frac{7}{8}$ " squares. Cut each square on the diagonal once to yield (4) $8\frac{7}{8}$ " HSTs (half-square triangles). Reserve remaining fabric.

Block A

- From reserved fabric, subcut (2) $4\frac{7}{8}$ " squares. Cut each square on the diagonal once to yield (4) $4\frac{7}{8}$ " HSTs (half-square triangles).

24290 R: Fabric F (red tonal)

Backing

- Cut (1) 36" x WOF strip. Subcut (1) 36" square.

24290 Z: Fabric G (yellow/white print)

Quilt Center

- Cut (1) $6\frac{5}{8}$ " x WOF strip. Subcut (2) $6\frac{5}{8}$ " squares. Cut each square on the diagonal once to yield (4) $6\frac{5}{8}$ " HSTs (half-square triangles).

Block B

- Cut (2) $4\frac{1}{2}$ " x WOF strips. Place template L (left) facing up (be able to read the words on the template) on the right side of the strip. Trace the template onto the fabric and cut (8) L-triangles. Label these pieces as *L Triangles*.
- Cut (2) $4\frac{1}{2}$ " x WOF strips. Place template R (right) facing up (be able to read the words on the template) on the right side of the strip. Trace the template onto the fabric and cut (8) R-triangles. Label these pieces as *R Triangles*.

24291 R: Fabric G (red stripe)

Binding

- Cut (4) $2\frac{1}{2}$ " x WOF strips.

Quilt Instructions

Quilt Center

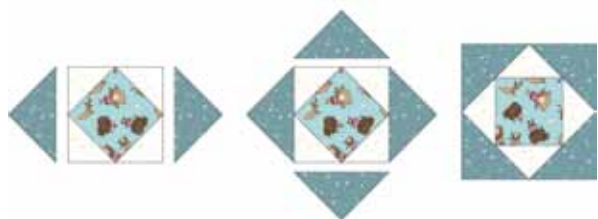
1. Referring to Diagram 1 and noting the orientation of the pieces, sew one $6\frac{5}{8}$ " Fabric G (yellow/white print) HST to each opposite side of the $8\frac{1}{2}$ " Fabric B (lt blue bear toss print) square. Sew one $6\frac{5}{8}$ " Fabric G (yellow/white print) HST to each remaining opposite side of the same $8\frac{1}{2}$ " Fabric B (lt blue bear toss print) square for the Quilt Center. Open and press triangles away from the center square. Quilt Center should measure $11\frac{7}{8}$ " square.

Diagram 1



2. Referring to Diagram 2 and noting the orientation of the pieces, sew one $8\frac{7}{8}$ " Fabric E (blue tonal) HST to each opposite side of the Quilt Center. Sew one $8\frac{7}{8}$ " Fabric E (blue tonal) HST to each remaining opposite side of the Quilt Center. Open and press triangles away from the center square. Quilt Center should measure $16\frac{1}{2}$ " square. Make a total of one Quilt Center.

Diagram 2



Block A

3. Referring to Diagram 3 and noting the orientation of the pieces, sew one $3\frac{3}{4}$ " Fabric D (blue/white print) HST to each opposite side of one $4\frac{1}{2}$ " Fabric B (lt blue bear toss print) square. Sew one $3\frac{3}{4}$ " Fabric D (blue/white print) HST to each remaining side of the Fabric B (lt blue bear toss print) square for Unit 2. Open and press triangles away from the center square. Unit 2 should measure $6\frac{1}{8}$ " square.

Diagram 3



4. Referring to Diagram 4 and noting the orientation of the pieces, sew one $4\frac{7}{8}$ " Fabric C (cream tonal) HST to one side of the Unit 2 square. Sew one $4\frac{7}{8}$ " Fabric E (blue tonal) HST to the opposite side of the Unit 2 square. Sew one $4\frac{7}{8}$ " Fabric C (cream tonal) HST to each remaining side of Unit 2 for Block A. Block A should measure $8\frac{1}{2}$ " square. Make a total of four Block A.

Diagram 4



Block B

Carefully handle the bias edges of the large fabric pieces when assembling Block B.

9. With wrong side facing and referring to Diagram 5, measure and place a mark $\frac{1}{4}$ " from the raw edge in the center of each short side of one $8\frac{1}{2}$ " x $16\frac{1}{2}$ " Fabric A (cream bear toss print) rectangle. Measure and place a mark $\frac{1}{4}$ " from the raw edge in the center of each long side of the same rectangle. Draw lines to connect the dots. Using a clear ruler and a rotary cutter, cut $\frac{1}{4}$ " *beyond* each drawn line for Block B Center Unit. Repeat this step for the three remaining $8\frac{1}{2}$ " x $16\frac{1}{2}$ " Fabric A (cream bear toss print) rectangles.

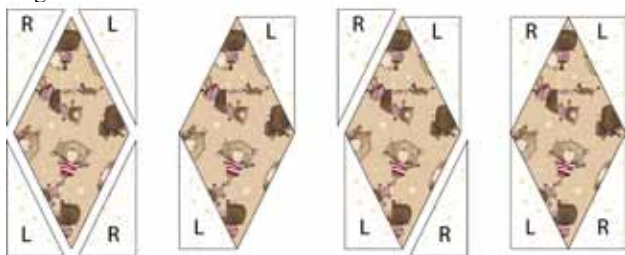
Diagram 5



10. Referring to Diagram 6 and noting orientation of the pieces, with right sides together, sew one Fabric G (yellow/white print) L-triangle to indicated opposite corners of the Block B Center Unit. Open and gently press the Fabric G (yellow/white print) L-triangles away from the Center Unit, using the side of the iron to avoid distorting the bias edge seam.

3. *Quilt Top Assembly.* Referring to the Quilt Layout Diagram and noting orientation of the rows, sew three block rows together in the following order: Row 1, Row 2, Row 1 for Quilt Top. Quilt Top should measure 32½" x 32½".

Diagram 6



11. Referring to Diagram 6 and noting orientation of the pieces, with right sides together, sew one Fabric G R-triangle to the each remaining corner of the Block B Center Unit. Open and carefully press the Fabric G (yellow/white print) R-triangles away from the Center Unit for Block B. Block B should measure 8½" x 16½". Make a total of four Block B.

Quilt Layout Diagram



Quilt Assembly

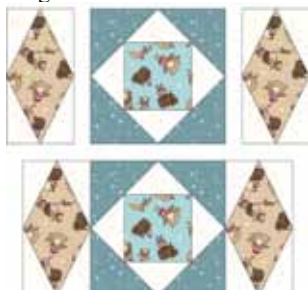
1. *Block Row 1.* Referring to Diagram 7 and noting orientation of the blocks, sew three blocks together in the following order: Block A, Block B, Block A for Block Row 1. Row 1 should measure 8½" x 32½". Make a total of two Row 1.

Diagram 7



2. *Block Row 2.* Referring to Diagram 8 and noting orientation of Block B and Quilt Center, sew three blocks together, in the following order: Block B, Quilt Center, Block B for Block Row 2. Row 2 should measure 16½" x 32½".

Diagram 8

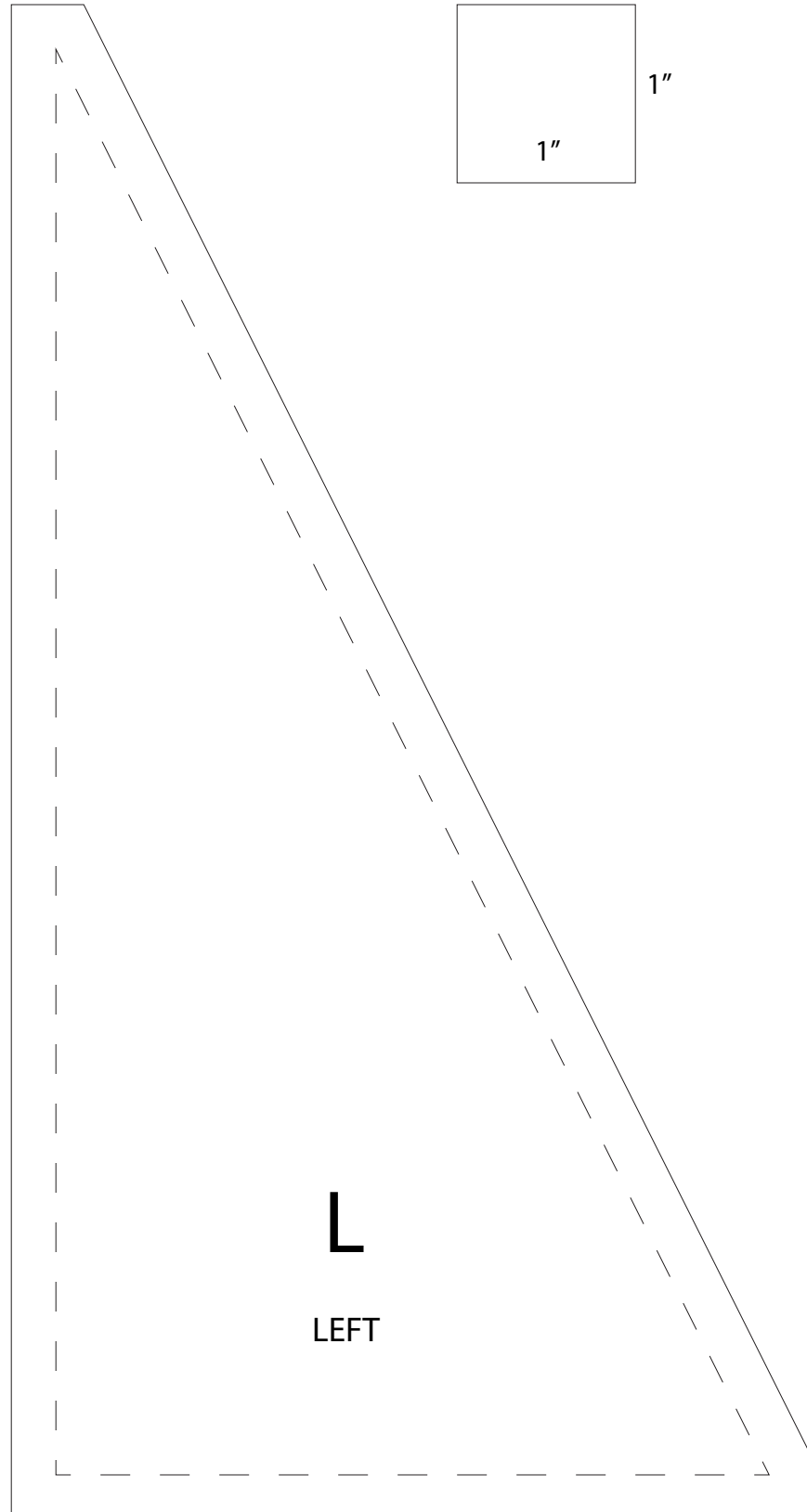


Finishing

1. If not already done, prepare Fabric F (red tonal) backing to measure 36" x 36".
2. Lay out the quilt top right side up on the top of the batting and the wrong side of the backing fabric.
3. Baste the layers together and quilt as desired. Trim the backing and batting even with the quilt top.
4. Sew the four 2½" x **WOF** Fabric G (red stripe) strips together (end to end) to make a continuous strip. Fold strip in half lengthwise (with wrong sides together) and press. Bind as desired.

While all possible care has been taken to ensure the accuracy of this pattern, we are not responsible for printing errors or the way in which individual work varies.

Block C, LEFT Template



Shine Bright Play Mat

Stacey Yacula

Block C, RIGHT Template

